

# BUDGETING YOUR COMPREHENSIVE EDUCATION PLAN

## FOR LEADERSHIP TEAMS

---

Yolanda Smith, Education Team  
January 10, 2022



New York City  
Independent Budget Office

110 William St., 14th floor  
New York, NY 10038  
Tel. (212) 442-0632

Fax (212) 442-0350  
[iboenews@ibo.nyc.ny.us](mailto:iboenews@ibo.nyc.ny.us)  
[www.ibo.nyc.ny.us](http://www.ibo.nyc.ny.us)

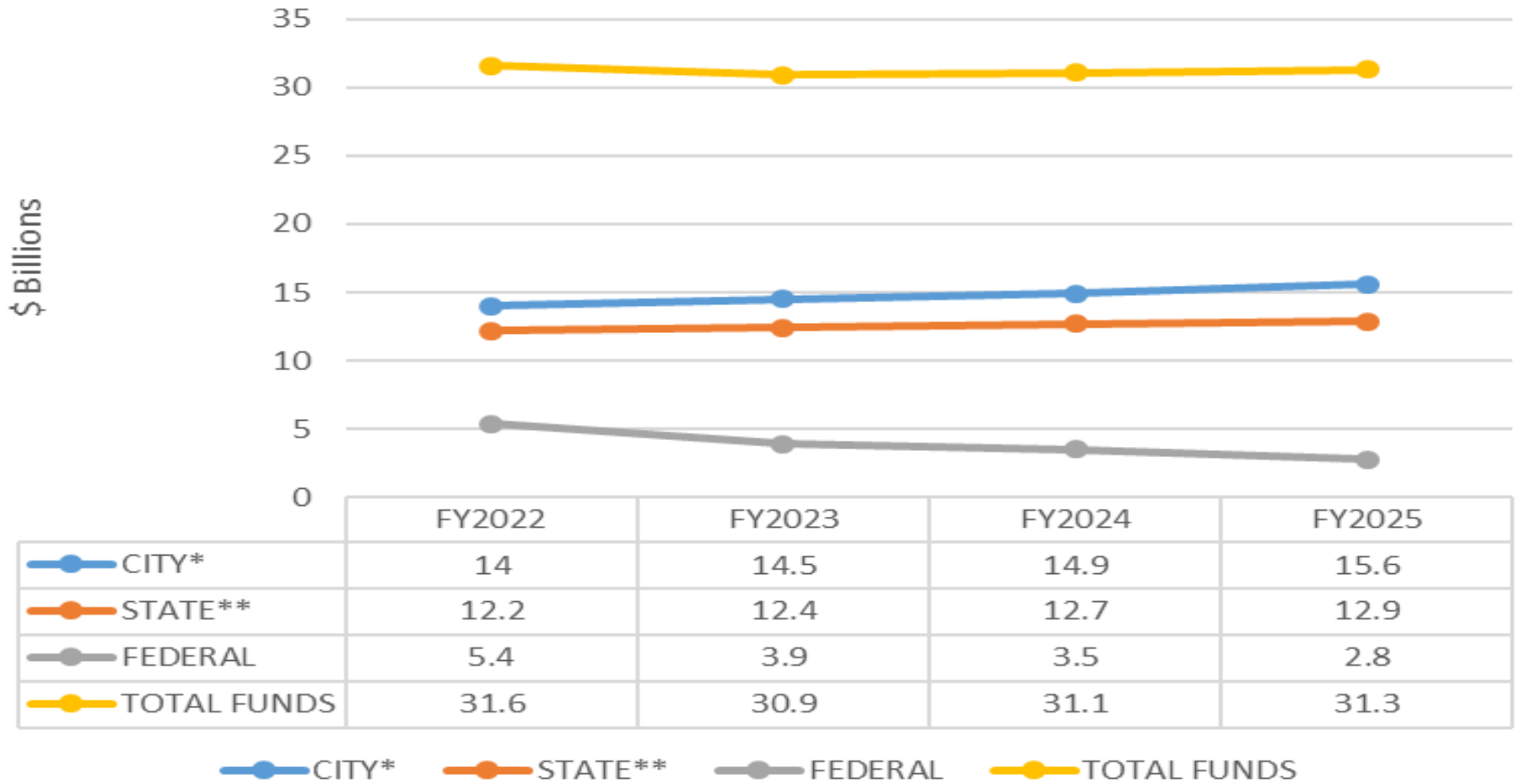
# Agenda

- Important role of leadership teams
- DOE's Budget – The Big Picture
- How money gets to schools
  - Old school vs. New school
  - FSF Formula
  - SAM# 1
- Budgeting Timeline
- Aligning the CEP with budget
  - Importance of school/student data
  - Understanding the budget allocations
  - Using the budget summary
- IBO Resources
- Conclusion

# Important Role of Leadership Teams

- Defined in Chancellor's regulations
- Vehicle for transparency
- Community level input/accountability
- School level teams dig into micro-data
- District level teams provide perspective on needs across the district
- City-wide teams can highlight broader system-wide concerns

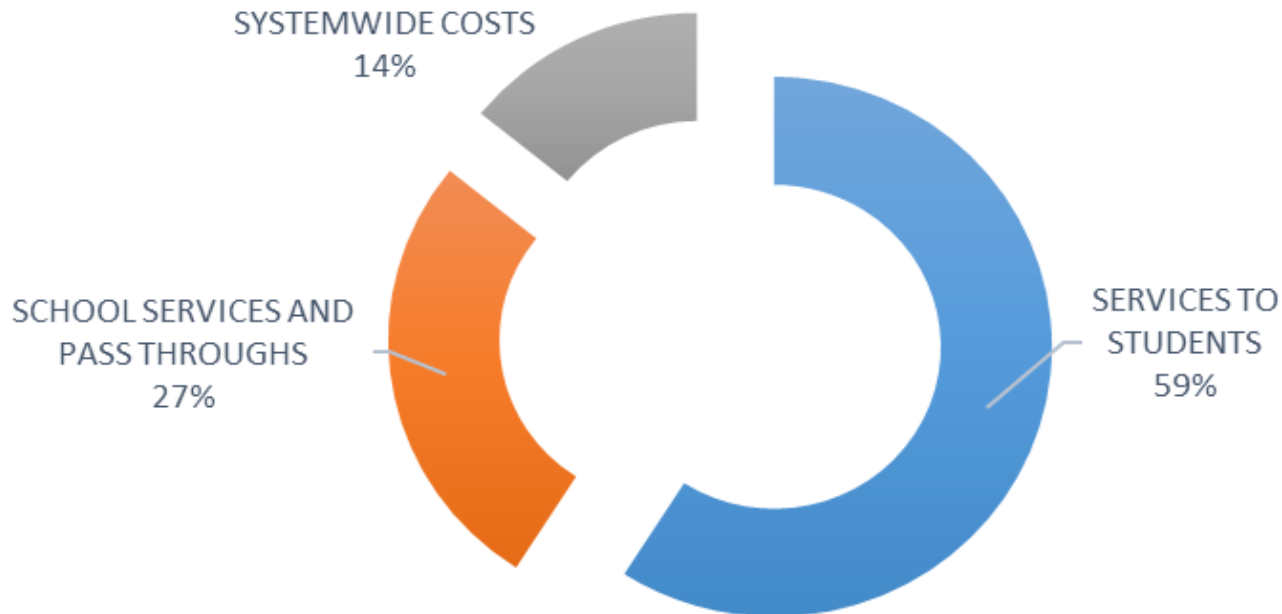
# TOTAL DOE BUDGET BY SOURCE



- \* Includes intra-city funds
- \*\* Includes other categorical funds.

# DOE Education Budget FY 2022

## Department of Education Budget



# DOE Program Budget

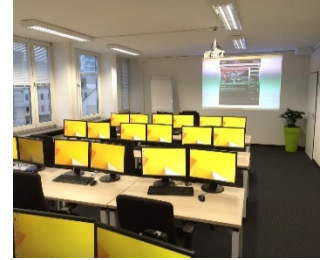
## TOTAL Department of Education Budget

FY 2022 NOV Plan (In Billions) \$ 31,639

SERVICES TO STUDENTS	18,690	SCHOOL SERVICES AND PASS THROUGHGS	8,458	SYSTEMWIDE COSTS	4,491
<b>General Education</b>	<b>7,876</b>	<b>Buildings Support</b>	<b>2,421</b>	<b>Administration</b>	<b>647</b>
General Education Instruction & School Leadership	7,876	School Facilities	1,301	Regional Administration	298
		School Safety	425	Central Administration	349
<b>Special Education</b>	<b>5,301</b>	Energy and Leases	695	<b>Fringe</b>	<b>3,844</b>
Special Education Instruction & School Leadership	2,377	<b>Noninstructional Services</b>	<b>2,047</b>	Fringe Benefits	3,844
Citywide Special Education & School Leadership	1,333	Pupil Transportation	1,517		
Special Education Instructional Support	708	School Food Services	530		
Special Education PreK Contracts	883				
<b>Early Education</b>	<b>2,074</b>	<b>Pass-throughs</b>	<b>3,990</b>		
Universal PreK	1,237	Charter Schools	2,741		
3K	242	Contract Schools	1,129		
Early Childhood Programs	595	NonPublic Schools & FIT	120		
<b>Reimbursables</b>	<b>3,439</b>				
Categorical Programs	3,439				



# Old School vs. New School



- Budget allocations were controlled by administrative DOE employees.
- Budget funds were distributed through district offices.
- Funds were represented as units.
- Budgets allocations are published on the website.
- Budget funds are placed directly in school budgets.
- Funds are represented as real dollars.

# *How money gets to schools - Fair Student Funding Formula (FSF)*

- FSF Foundation—a fixed sum of \$225,000 for all schools;
- Pre-established dollar amounts per student:
  - ✓ Based on student grade levels;
  - ✓ Based on student needs;
- Per capita dollar amounts change from time to time



# How money gets to schools – School Allocation Memo #1

**Department of Education**  
Division of Finance  
52 Chambers Street, New York, NY, 10007

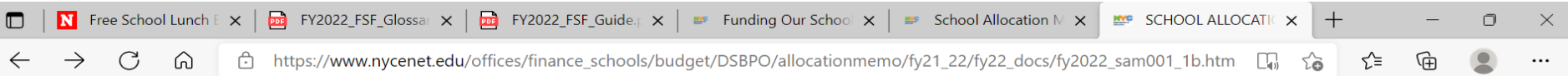
**Division of School Budget Planning & Operations**

[School Allocation Home](#) | [School Allocation Memorandums by Category FY 2022](#)

## School Allocation Memorandums FY 2022

SAM #	Title	Date
1	Fair Student Funding (FSF)	
1.1	Fair Student Funding Programming Details	
1.1a	DOE School Overview Page	
1.1b	Fair Student Funding Memorandum	June 18, 2021
1.1c	Fair Student Funding Guide	June 18, 2021
1.1d	Fair Student Funding Glossary	June 18, 2021
1.1e	Fair Student Funding Career & Technical Education (CTE) Tiers	June 18, 2021
1.1f	Fair Student Funding Per Capitas	June 18, 2021
1.1g	Funds Over Formula Adjustment	June 18, 2021
1.2	School Specific Data	
1.2a	School Budget Overview	
1.2b	School Budget Detail	
1.3	FY 2022 Allocation Summary by District	June 18, 2021
2	Arts Supplemental Funding through Fair Student Funding	June 18, 2021
3	Career and Technical Education Supplement	June 18, 2021
4	ELA and Math Supplemental Support Services	June 18, 2021
5	Contract for Excellence	June 18, 2021

# SAM #1



**NYC** Department of Education  
Division of Finance  
52 Chambers Street, New York, NY, 10007



[School Allocation Home](#) | [School Allocation Memorandums FY 2022 by Category](#) | [School Allocation FY 2022 by Numbers](#)

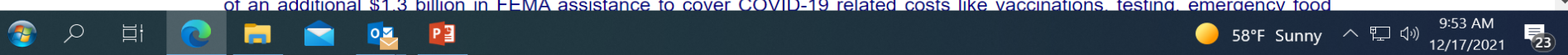
## SCHOOL ALLOCATION MEMORANDUM NO. 01, FY 2022

**DATE:** June 18, 2021  
**TO:** Executive Superintendents  
Community Superintendents  
High School Superintendents  
Borough/Citywide Office Teams  
School Principals  
**FROM:** Lindsey Oates, Chief Financial Officer  
**SUBJECT:** Fair Student Funding

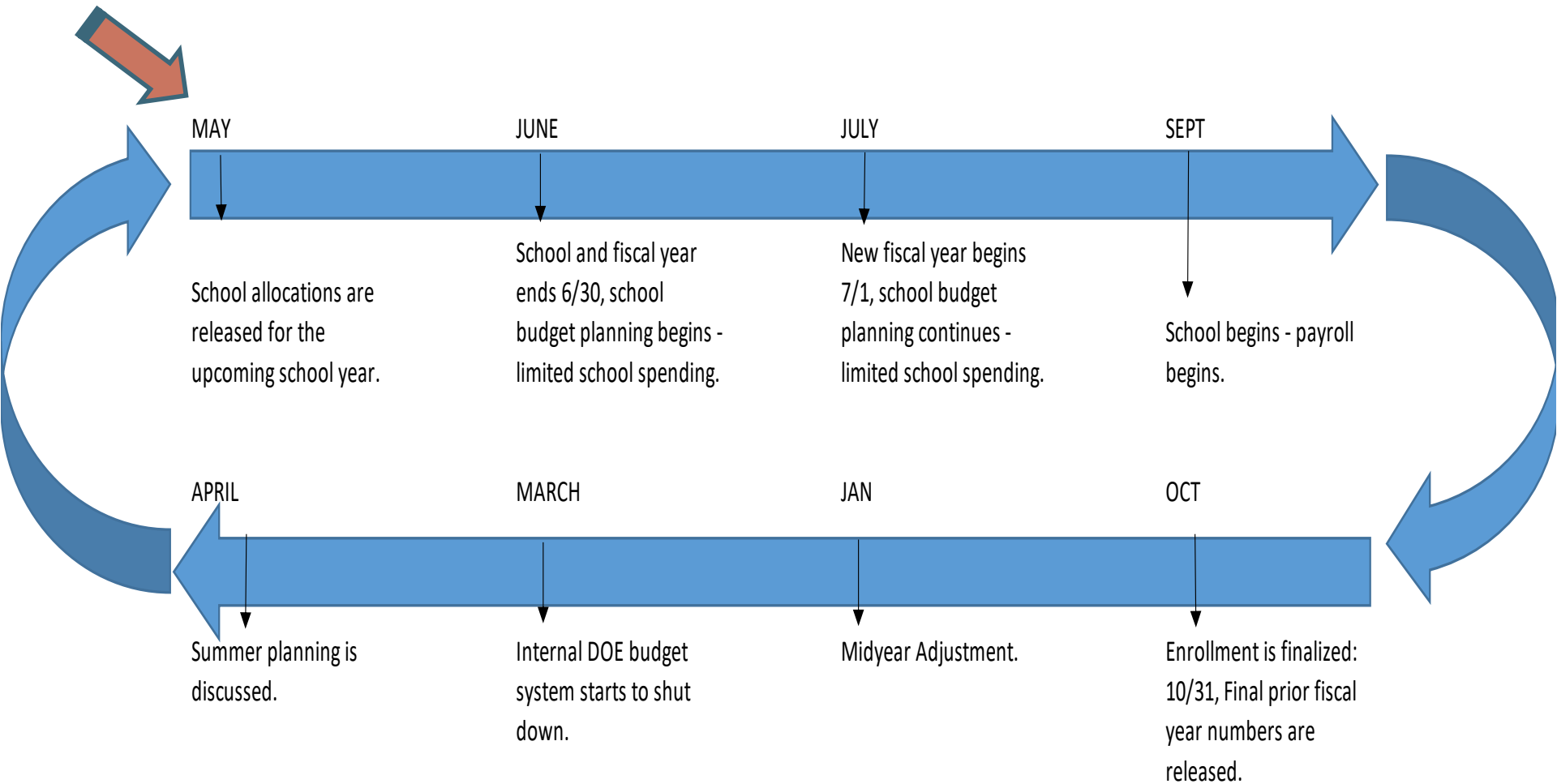
This memorandum allocates Fair Student Funding (FSF) to schools and provides a brief overview of budget updates for FY 2022.

The City's recovery from the COVID-19 pandemic is ongoing, following the complete transformation of our city and schools due to the global pandemic. Now, with unprecedented investments from local, state, and federal government, we can deepen our commitments and effectively tackle the lasting impacts of the pandemic, especially the academic and social-emotional needs of all of our school communities.

In addition to the federal Coronavirus Response and Relief Supplemental Appropriations Act enacted on December 2020, on March 2021, President Joseph R. Biden signed the American Rescue Plan Act, providing robust federal funding to New York City and other localities that have been on the front lines of COVID-19. The City's Financial Plan recognizes \$5.9 billion in direct local aid and \$7.0 billion in federal education funding from the two federal stimulus bills through FY 2025. This is on top of an additional \$1.3 billion in FEMA assistance to cover COVID-19 related costs like vaccinations, testing, emergency food



# Budget Timeline



# Align the CEP



- Budget ties to needs of enrolled students AND should reflect the schools' overall educational mission.
- Review a school's special mission, if any.
- Discuss school/student data.
- For each student subgroup, what are the stated goals, what needs to improve, what needs to be maintained, and/or what other support is needed?

# School and Student Data

Schools and student-based data inform the Comprehensive Education Plan (CEP).

## Examples of School Data

- Total school size
- Grades served
- School location
- School mission
- Regular programs
- Special programs/classes offered
- Challenges
- Building condition
- Overall school quality

## Examples of Student Data

- Numbers of students/grade
- Achievement levels
- Graduation rates
- Title I students
- ESL, ELL, ENL, Multi-lingual learners
- Special needs

# Understanding the Allocations: ALLOCATION CATEGORIES

The image shows a screenshot of a web browser displaying two side-by-side tables of budget allocations. The browser tabs indicate the URL is [https://www.mycenet.edu/offices/d\\_chanc\\_oper/budget/dbor/galaxy/galaxyallocation/default.aspx?DDBSSS\\_INPUT=M540](https://www.mycenet.edu/offices/d_chanc_oper/budget/dbor/galaxy/galaxyallocation/default.aspx?DDBSSS_INPUT=M540).

**Table 1 (Left):** Lists various funding categories with their corresponding dollar amounts. A bracket on the left side groups the first 10 items, and an arrow points to the 'TL Fair Student Funding HS' item.

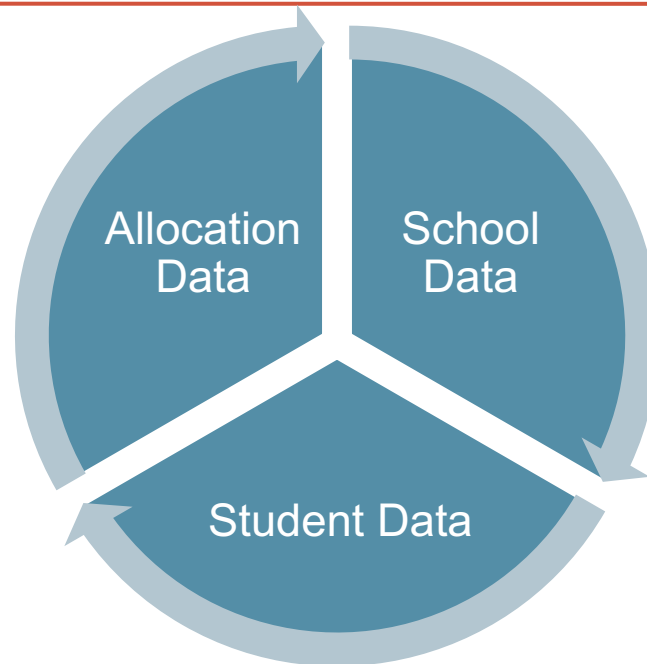
Category	Amount
Smart Schools Bond Act	\$ 55,210
Title I SWP	\$ 953,906
Title I SWP Carry Over	\$ 124,878
Title I SWP Carry Over Parent and Family Engage	\$ 4,735
Title I SWP Parent and Family Engagement	\$ 9,539
Title I SWP STH	\$ 144,747
Title I SWP Translation Services	\$ 5,086
Title III LEP	\$ 23,625
Title IV Community Coordinator	\$ 89,930
Title IV Fall Reopening Planning Grant	\$ 13,326
Title IV Well Rounded ELA Math Support	\$ 22,435
TL 09 C4E ICT HS	\$ 177,703
TL Bridging the Gap	\$ 108,762
TL CB School Staff	\$ 189,090
TL Computer Maintenance HS	\$ 19,009
TL CRRSA FSF Floor Raise HS	\$ 358,476
TL CRRSA Surplus Rollover HS	\$ 104,400
TL E&E College Access 4 All HS	\$ 32,000
TL ELA/Math Student Support	\$ 64,949
TL Fair Student Funding HS	\$ 10,808,315
TL FSF Floor Raise HS	\$ 607,302

**Table 2 (Right):** Lists 'Allocation Category' with 'FY 2022' amounts. A bracket on the left side groups the first 10 items, and another bracket groups the next 5 items.

Allocation Category	FY 2022
AIDP Attendance Shared	\$ 150,490
ARPA Academic Recovery	\$ 480,000
ARPA Academic Recovery Arts	\$ 120,000
ARPA Academic Recovery NYSITELL Testing Admin	\$ 17,697
ARPA Academic Recovery SE After-School Instruction	\$ 157,004
ARPA Academic Recovery SE Counseling	\$ 12,195
ARPA Academic Recovery SE Intervention Training	\$ 2,363
ARPA Academic Recovery SE Planning Prep	\$ 16,251
ARPA Academic Recovery SE RS Related Services	\$ 33,757
ARPA Election Day Remote Planning	\$ 4,258
ARPA School COVID Planning Expansion	\$ 31,335
ARPA Vaccine Policy Coverage	\$ 85,355
Contract for Excellence FY 09 HS	\$ 186,353
CRRSA Computer Maintenance	\$ 3,911
CRRSA Home Language Libraries	\$ 1,513
CRRSA Situation Room	\$ 2,392
High Need Support for Title I	\$ 39,491
High Need Support for Title I STH	\$ 5,992
IDEA RS IEP Para	\$ 61,025
IDEA SBST Shared	\$ 154,225
OASAS Sub Abuse	\$ 90,166

# PUTTING IT ALL TOGETHER

SCHOOL DATA + STUDENT DATA + ALLOCATION DATA =  
LEADERSHIP TEAM INPUT



# BUDGET SUMMARY EXAMPLE

**Main School**

**Leadership**

Assignment	Positions	Budget
HEAD OF SCHOOL	1.00	\$ 192,726
AP - ORGANIZATION	3.00	\$ 446,002
AP - SPECIAL ED	1.00	\$ 95,479
AP - SUPERVISION	3.00	\$ 450,342
<b>Leadership Total</b>	<b>8.00</b>	<b>\$ 1,184,549</b>

**Coordinator/Supervisor/Dean**

Assignment	Positions	Budget
PARENT COORDINATOR	1.00	\$ 43,968

**Secretary**

Title	Positions	Budget
SCHOOL SECRETARY	5.00	\$ 311,567

**High School Departments**

Subject	Type of Class/Service	Positions	Budget
ENGLISH LANGUAGE ARTS	SUBJECT SPECIFIC	10.00	\$ 951,370
ENGLISH LANGUAGE ARTS	WHOLE CLASS	2.00	\$ 192,624
<b>ENGLISH LANGUAGE ARTS</b>	<b>Sub-Total</b>	<b>12.00</b>	<b>\$ 1,143,994</b>
ESL	PUSH IN/PULL OUT	2.00	\$ 228,482
ESL	SUBJECT SPECIFIC	2.00	\$ 192,624

**SUMMER STUDENT PROGRAMS**

**Per Session Total** \$ 1,415,576

**Pro Rata**

Assignment	Budget
ACADEMIC	\$ 12,831

**OTPS**

Title	Budget
CURRICULUM & STAFF DEVELOPMENT CONTRACTS	\$ 66,000
DATA PROCESSING REPAIR - CONTRACTUAL	\$ 22,920
EDUCATIONAL CONSULTANTS	\$ 50,000
EDUCATIONAL SOFTWARE	\$ 81,268
EQUIPMENT - GENERAL	\$ 115,515
LIBRARY BOOKS	\$ 10,590
NON-CONTRACTUAL SERVICES	\$ 67,274
PROFESSIONAL SERVICES OTHER	\$ 40,649
SUPPLIES - GENERAL	\$ 1,228,109
TEXTBOOKS	\$ 84,173
TRANSPORTATION OF STAFF - NON-CONTRACT	\$ 40,000
<b>OTPS Total</b>	<b>\$ 1,806,498</b>

**Setasides**

Title	Budget
-------	--------



# IBO Resources

IBO's primary responsibility is to provide nonpartisan information to city officials and the public, about the city budget and tax revenues. This ranges from reviewing every city agency's spending to more in-depth considerations of program costs, historical trends, tax burdens, debt, or capital finances.

## **IBO's work includes:**

- Issuing required reports
- Examining topics of interest
- Responding to questions
- Providing educational materials to facilitate understanding and participation in the budget process

## **IBO's Education Team:**

- Memorandum of Understanding with the DOE
- Fiscal monitor of the NYC Department of Education

# Key Takeaways and Contact Info

- Leadership teams have a key role in the CEP budget discussion.
- Budget is the financial plan supporting the school, its mission, and its students.
- School funds are distributed by formula based on types of students and what they need.
- School, student, and budget data is needed to understand if the school matches its financial resources to its students' and schools' needs.
- Ask questions.

Thank You